



## Experience the Sunshine Coast at its Finest

Nestled on a gentle slope overlooking the Trail Islands, the exclusive 29 home strata enclave of Seaview Villa Estates of garden apartments and townhomes offers a one of a kind combination of exceptional quality, luxury and spaciousness in a scenic, tranquil setting.



Each large, beautifully appointed garden apartment and townhome offers the discerning homeowner a unique lifestyle opportunity without compromise. Enjoy the best of both worlds, spaciousness and the convenience of a carefree townhome or garden apartment.

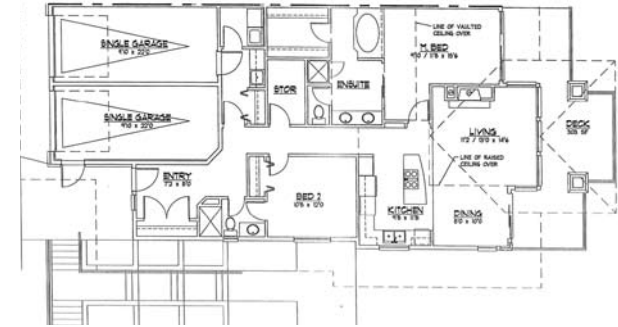
Every elegant townhome provides for convenient one level living with a full size walk out lower level. Large sun decks, generous patios, enclosed garages and stunning ocean views are all part of the package. The high quality construction and finishing are setting a new standard for the Sunshine Coast. This is your opportunity to have it all, to live, work and play and truly enjoy life to its fullest on the beautiful natural Sunshine Coast.



Phase I is sold out and Phase II is now selling at preconstruction prices with occupancy expected summer/fall 2009. With features like open floor plans, hardwood floors, granite counter tops, soaker tubs, vaulted ceilings, energy star appliances, gas fireplaces and 9 ft. ceilings it is easy to understand the popularity of Seaview Villa Estates.



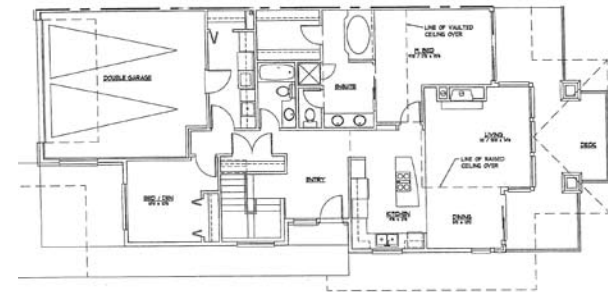
### Garden Apartment - upper level



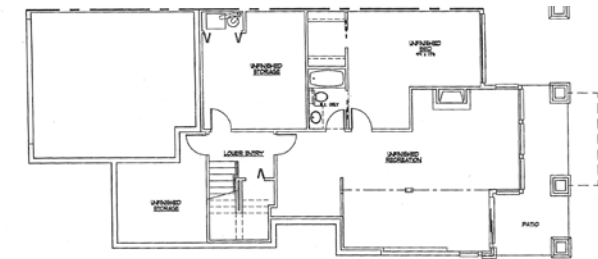
### Garden Apartment - lower level



### Townhome - main floor



### Townhome - lower floor





**Phase II**

**4 Townhomes** 1,421 sq.ft. on main floor  
 1,421 sq.ft. on lower floor  
 2,842 sq.ft. TOTAL  
 Starting at \$599,000

**8 Garden Apartments** 1,415 sq.ft. upper  
 1,380 sq.ft. lower  
 Starting at \$429,000

*Dimensions and sizes are approximate and subject to change. Preconstruction prices are subject to change without notice.*



*Seaview Villa Estates is a licensed registered builder with BC Home Protection office and offers 2, 5 and 10 year extended warranty through National Home Warranty.*



*Seaview Villa Estates is a relaxing 40 minute ferry ride from Horseshoe Bay in West Vancouver to Gibsons Landing on the Sunshine Coast and then a 25 minute drive along the Coast Highway 101 to McCourt Road. Turn Right on McCourt Road and you're here. Call today for a private showing or visit our show home which is open most weekends. Now is the time to live the lifestyle of your dreams.*



# Seaview Villa ESTATES

AN EXCLUSIVE STRATA  
 ENCLAVE OF  
 GARDEN APARTMENTS  
 AND TOWNHOMES  
 IN SUPERNATURAL SECHELT  
 ON THE SUNSHINE COAST



[WWW.SEAVIEWVILLESTATES.COM](http://WWW.SEAVIEWVILLESTATES.COM)