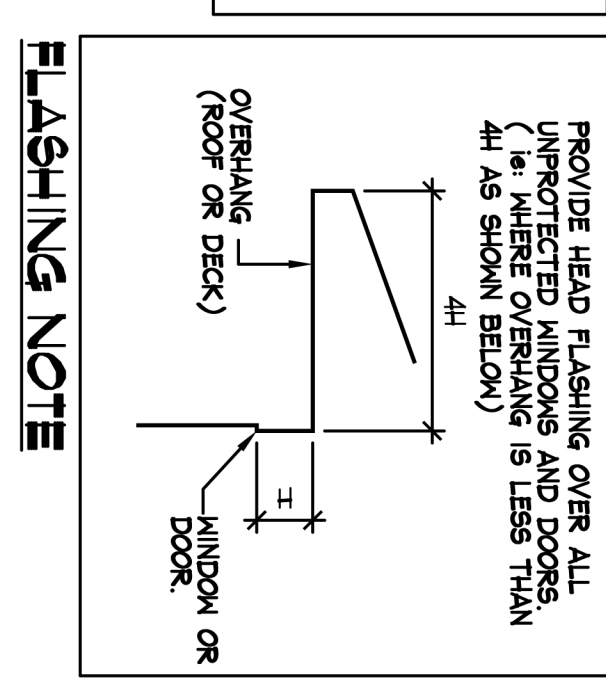


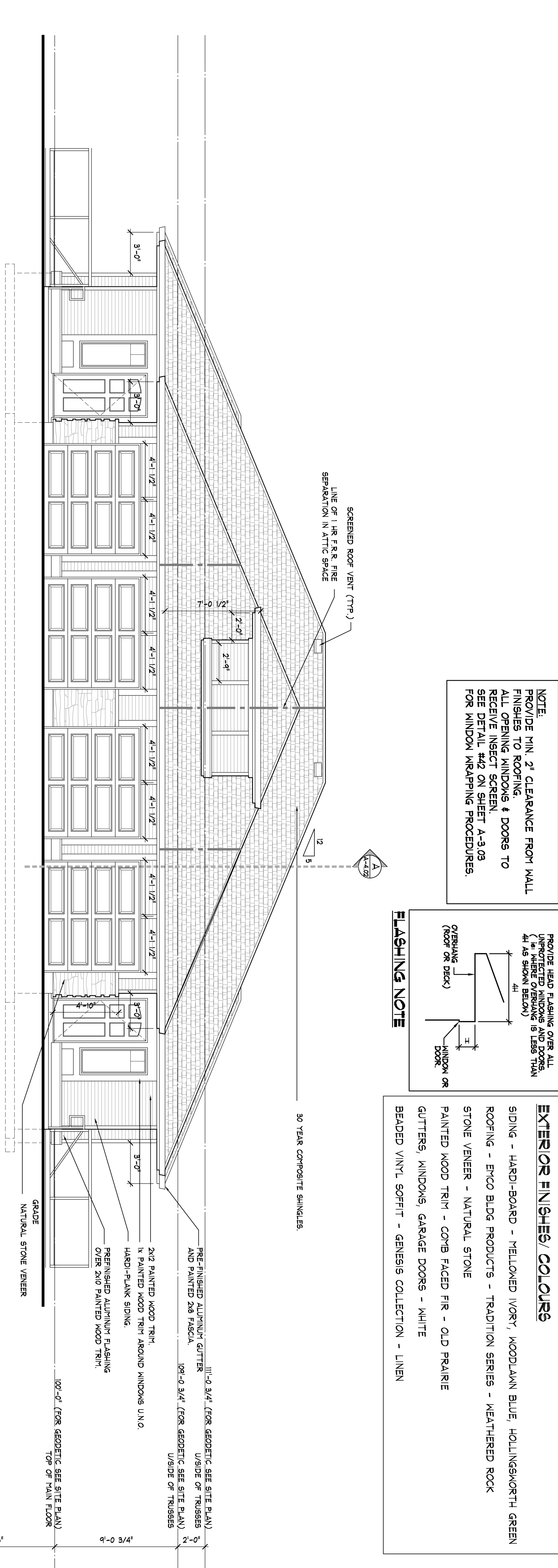
SIDE ELEVATION
SCALE: 1/4" = 10'

NOTE:
PROVIDE MIN. 2" CLEARANCE FROM WALL FINISHES TO ROOFING.
ALL OPENING WINDOWS & DOORS TO RECEIVE INSECT SCREEN.
SEE DETAIL #42 ON SHEET A-3.03 FOR WINDOW WRAPPING PROCEDURES.



EXTERIOR FINISHES/ COLOURS

SIDING - HARD-BOARD - MELLOWED IVORY, WOODLAWN BLUE, HOLLINGSWORTH GREEN
 ROOFING - EYCO BLDG PRODUCTS - TRADITION SERIES - WEATHERED ROCK
 STONE VENEER - NATURAL STONE
 PAINTED WOOD TRIM - COYB FACED FIR - OLD PRAIRIE
 GUTTERS, WINDOWS, GARAGE DOORS - WHITE
 BEADED VINYL SOFFIT - GENESIS COLLECTION - LINEN



FRONT ELEVATION
SCALE: 1/4" = 10'

March 18, 2009 ADJUST PHASE LINES - 5 PHASES January 09, 2009 ADJUST PHASE LINES - 7 PHASES October 24, 2008 ADJUST PHASE LINES - 5 PHASES March 26, 2008 ADJUST PHASE LINES FOR PHASE 2 March 24, 2008 BUILDING PERMIT FOR PHASE 2 January 21, 2008 REVISIONS FOR PHASE 2 MARCH 23, 2007 GENERAL REVISIONS SEPTEMBER 30, 2005 REVISED FOR BUILDING PERMIT AUGUST 12, 2005 RE-ISSUED FOR BUILDING PERMIT MARCH 29, 2005 ISSUED FOR BUILDING PERMIT FEB. 7, 2005 ISSUED FOR CONSULTANTS JUNE 22, 2004 ISSUED FOR DEVELOPMENT PERMIT JUNE 22, 2004 REVISED ELEVATIONS & COLOURS REVISIONS CONSULTANTS		PROJECT 31 UNIT TOWNHSE /GARDEN APT DEVELOPMENT SEAVIEW VILLA ESTATES LTD. LOCATION MCCOURT RD & JASPER RD SECHelt, BC DRAWING TITLE BUILDING TYPE C: GARDEN APT. EXTERIOR ELEVATION DRAWN FJK SCALE AS NOTED SHEET NO. A-3.03 FILE NO. 0308	
CHECKED DATE Aug. 12, 2005	DATE Aug. 12, 2005	DATE Aug. 12, 2005	DATE Aug. 12, 2005